

Central Purchasing Declaration of State of Emergency

Work Order No.:

EC No.: 7081

Project No.: 201900289

Date of Emergency: 12/18/2019

Detailed Description of Emergency Condition:

On December 16, 2019 a Pump Mechanic was investigating a high-water alarm at the northern venturi chamber at Ball Pump Station. While he was in the chamber, he noticed that the piping in the chamber is out of alignment. The venturi is currently lifted off its concrete support and the piping at the eastern end of the chamber is bearing on the chamber wall. For the venturi to be lifted off its concrete support, the discharge header outside of the chamber had to move downward. Figure 1 shows the piping layout in the vicinity of the venturi chamber. The current condition of the northern venturi is shown in Picture 1. The central venturi is also displaced, but to a lesser extent. The southern venturi did not show signs of displacement.

Ball Pump Station is a critical pump station for delivering water to our northern service area and we need to ensure that the station stays in service. The Engineering Department is moving forward with installing bypass piping on the northern and southern sides of the station. The bypass piping will allow ECWA to keep the plant operational if there is a failure on the eastern side the discharge piping. The proposed work is depicted in Sketch 1 and Sketch 2.

It is imperative that this works gets started as soon as possible. The material and labor required to make the bypass piping modifications will need to be procured in a timely manner to ensure that the pump station stays operational. Due to the specialized nature of working with prestressed concrete cylinder pipe (PCCP), it will be necessary to utilize a contractor that is experienced with working with this pipe to provide the best possible product in the shortest amount of time.

Authorized Signature: Pursuant to the Purchasing Guidelines (Page 17) authorization granted to one or more of the following two (2) individuals: Any Commissioner, the Executive Director, Executive Engineer, and/or the Director of Administration.

Russell J. Stott 12/20/19
Laromya Jester 12/20/19

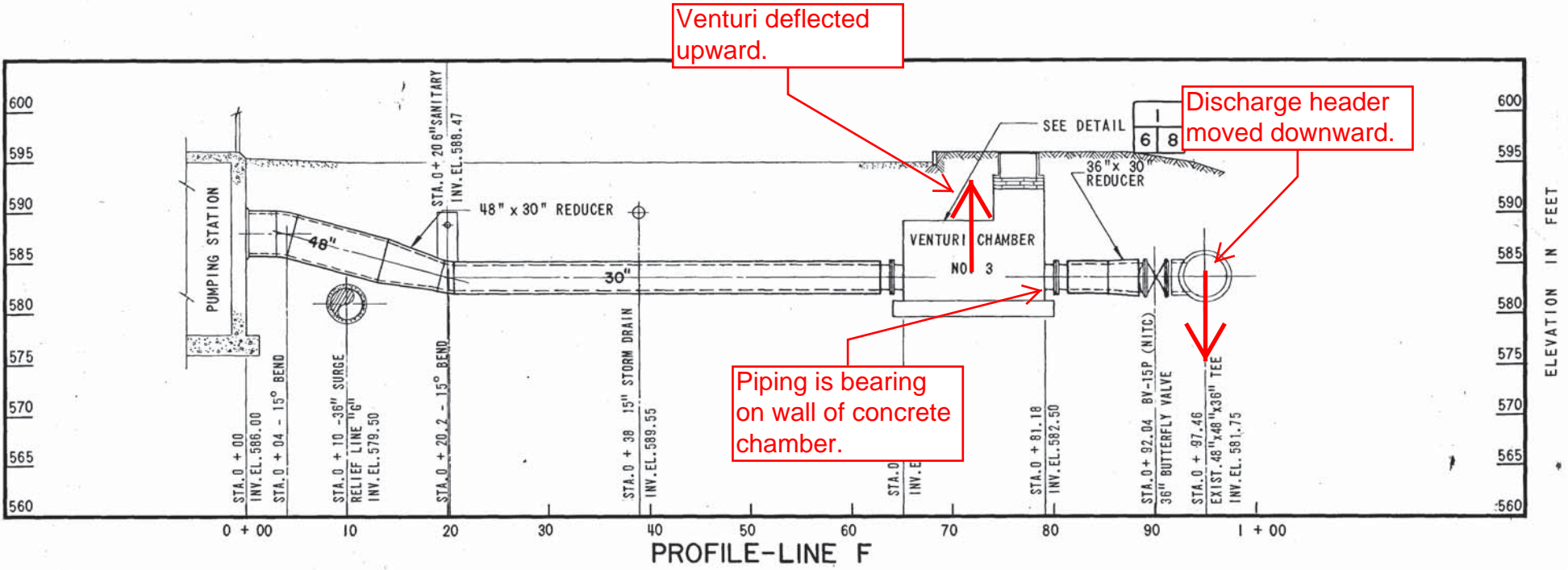
To: Purchasing System File

P:\EMERG\201900289\Emergency Declaration.docx (goldenrod)

Rev. 10/06/2010

Attachments: Figure 1
Picture 1
Sketch 1
Sketch 2

Figure 1



FINISHED GRADE



Insulation is pushed forward.

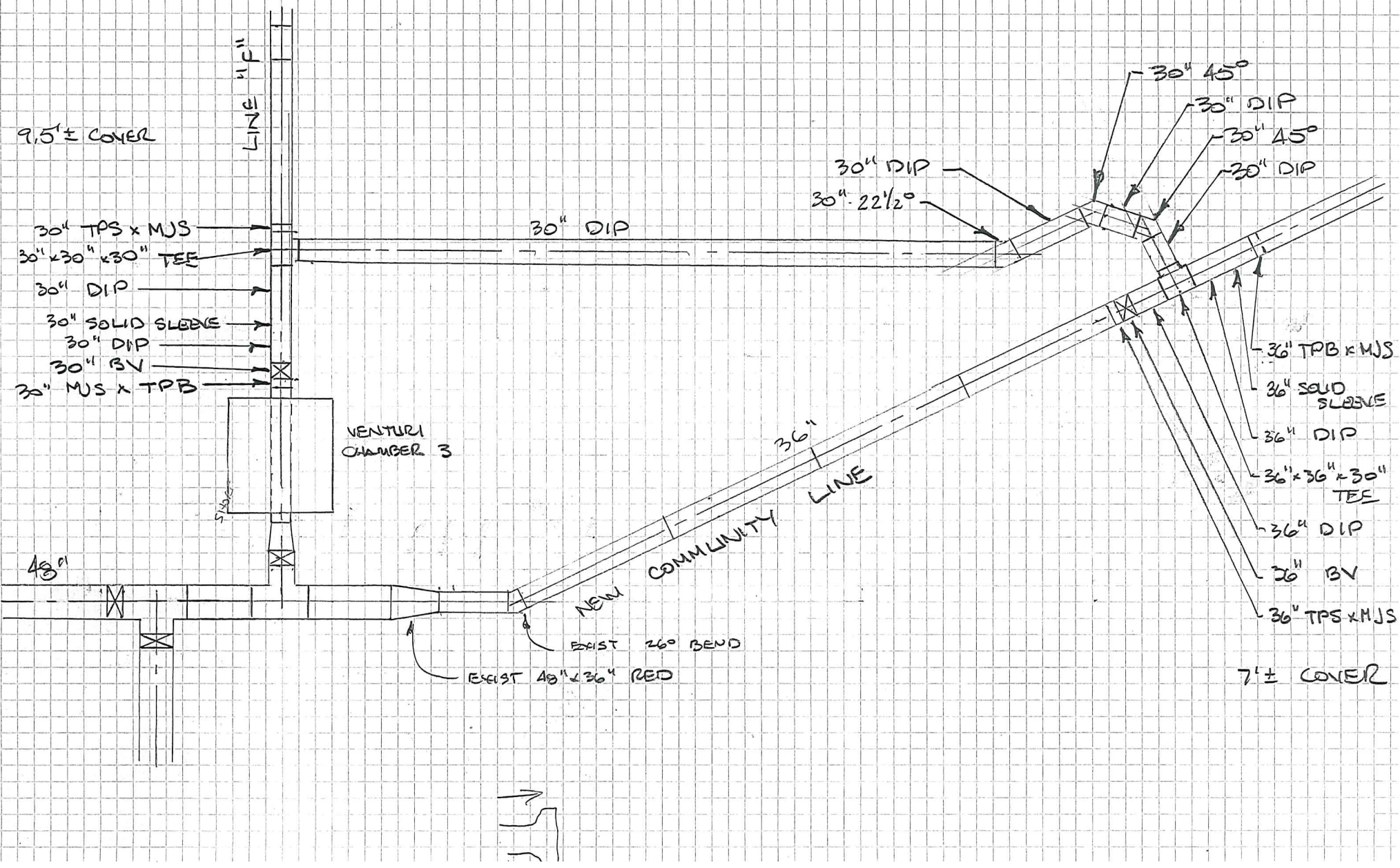
Picture 1
North Venturi

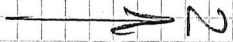
Venturi lifted off of concrete support.

Restraint is deformed.

Sketch 1

Northern Bypass Piping





Sketch 2 Southern Bypass Piping

