




## ERIE COUNTY WATER AUTHORITY INTEROFFICE MEMORANDUM

August 4, 2020

To: Terrence D. McCracken, Secretary to the Authority

From: Michael J. Quinn, PE, Senior. Distribution Engineer 

Subject: Contract MP-084  
48-inch Transmission Main – Town of Tonawanda  
SEQR Lead Agency Designation  
ECWA Project No. 202000084

---

On February 13, 2020, the Erie County Water Authority (the “Authority”) executed an agreement with Arcadis of New York, Inc. (Arcadis) for the design of a new 48-inch diameter transmission main from the southernmost point on Brookside Terrace West (in the City of Tonawanda) easterly to a point approximately 325 feet west of Military Road in the Town of Tonawanda (approximate length of 4,250 LF). The new transmission main will parallel the existing 48-inch transmission main in that area, adding a redundant pipe to the distribution system.

During the preliminary design, Arcadis identified several environmental factors that may impact the successful completion of the project. Arcadis subsequently prepared Part I of the New York State Environmental Quality Review Act (SEQR) Short Environmental Assessment Form (EAF) (attached). Based on the EAF process, Arcadis believes the project is designated as an Unlisted Action and is thus subject to further review under SEQR.

As an Unlisted Action, Arcadis recommended that the Authority declare itself lead agency and conduct a coordinated review using the Part I Short EAF. Arcadis also recommended the following involved agencies be included in the coordinated review:

1. Town of Tonawanda
2. City of Tonawanda
3. Erie County Health Department
4. New York State Office of Parks, Recreation and Historic Preservation
5. United States Army Corps of Engineers
6. CSX Transportation
7. National Grid
8. New York State Department of Environmental Conservation (NYSDEC)

As outlined in the letter from Arcadis dated July 1, 2020 (attached), the Part I Short EAF was completed using the NYSDEC’s EAF Mapper Application. This is a Geographic Information

System (GIS) tool specifically designed to facilitate the SEQR process by utilizing approved spatial reference information.

Subsequently, Arcadis' recommendation was reviewed by both the Engineering and Legal Departments and both concur with Arcadis review. Therefore, it is recommended that the Board declare the Authority as Lead Agency under SEQR and begin the coordinated review process. Moving forward, as Lead Agency under the coordinated review process, it will be the Authority's responsibility to submit the design documents along with the EAF to the involved agencies. The agencies will have to submit comments within thirty (30) days. The Authority will review and address any comments submitted by the designated agencies. The Authority will then make a determination of significance under SEQR. This determination will render the Authority's decision relative to the environmental impact of the project.

MJQ:jmf

Attachments

cc: R.Stoll

L.Kowalski

S.Denzler

CONT-MP-084-2001

Mr. Leonard Kowalski, PE  
Executive Engineer  
3030 Union Road  
Cheektowaga, NY 14227

Arcadis of New York, Inc.  
50 Fountain Plaza  
Suite 600  
Buffalo  
New York 14202  
Tel 716 667 0900  
Fax 716 842 2612  
www.arcadis.com

Subject:  
MP-084 Town of Tonawanda Transmission Main Design  
Special Services – State Environmental Quality Review Act Part I

Water Business Line

Dear Mr. Kowalski:

Date:  
July 1, 2020

Arcadis of New York, Inc. (Arcadis) has revised Part I of the New York State Environmental Quality Review Act (SEQR) Short Environmental Assessment Form (EAF) for the MP-084 Town of Tonawanda Transmission Main Design (MP-084) project based on comments received from the Erie County Water Authority (ECWA) on June 16, 2020. The received ECWA comments and corresponding Arcadis responses are provided in Attachment A with supplementary information for these responses provided in Attachment B.

Contact:  
Dan Seider, PE

Phone:  
716 667 6670

Email:  
Daniel.Seider@arcadis.com

As an Unlisted Action, Arcadis recommends that ECWA declare lead agency and conduct a coordinated review with the following involved agencies:

Our ref:  
30041729.0000

1. Town of Tonawanda
2. City of Tonawanda
3. Erie County Health Department
4. New York State Office of Parks, Recreation and Historic Preservation
5. United States Army Corps of Engineers
6. CSX Transportation
7. National Grid

Available contact information for each agency is provided in Attachment C. The revised Part I Short EAF is provided in Attachment D and was completed using the New York State Department of Environmental Conservation's (NYDEC) EAF Mapper Application. This is a Geographic Information System (GIS) tool specifically designed to facilitate the SEQR process by utilizing approved spatial reference information. The results of this tool are provided in Attachment F and indicate the following responses for the Part I Short EAF:

**Table 1. NYSDEC SEQR EAF Mapper Application Responses**

Part I Short EAF Question #	Description	Answer
Question 7	Is the site of the proposed action located in, or does it adjoin, a state listed Critical Environmental Area?	No
Question 12a	Does the project site contain, or is it substantially contiguous to, a building, archaeological site, or district which is listed on the National or State Register of Historic Places, or that has been determined by the Commissioner of the NYS Office of Parks, Recreation and Historic Preservation to be eligible for listing on the State Register of Historic Places?	No
Question 12b	The project site, or any portion of it, located in an adjacent to an area designated as sensitive for archaeological sites on the NY State Historic Preservation Office (SHPO) archaeological site inventory?	Yes
Question 13a	Does any portion of the site of the proposed action, or lands adjoining the proposed action, contain wetlands or other waterbodies regulated by a federal, state, or local agency?	Yes
Question 15	Does the site of the proposed action contain any species of animal, or associated habitats, listed by the State or Federal government as threatened or endangered?	No
Question 16	Is the project site located in the 100-year floodplain?	No
Question 20	Has the site of the proposed action or an adjoining property been subject of remediation (ongoing or completed) for hazardous waste?	Yes

The "Yes" response from the NYSDEC SEQR EAF Mapper for Question 13a was verified through the National Wetlands Inventory GIS dataset. The response for Question 20 was confirmed by Arcadis during the MP-081 Routing Study. To determine the rationale for the "Yes" response for Question 12b, the approximate project site area was outlined in the New York State SHPO's Cultural Resource Information System. Results of this tool indicate the project area is within an archaeologically sensitive area as shown in the screenshot in Attachment G.

The recommended next steps for ECWA are to declare lead agency for this project and submit the Part I Short EAF and overview map to the involved agencies. ECWA would then have 20 calendar days from the receipt of information from all agencies to make a determination, including a Positive Declaration, Negative Declaration or Conditioned Negative Declaration.

Please contact me with any questions related to the development of this SEQR Part I Short EAF form or provided descriptions. We look forward to continued success on this project.

Mr. Leonard Kowalski, PE  
Erie County Water Authority  
July 1, 2020

Sincerely,

Arcadis of New York, Inc.



Dan Seider, PE  
Project Manager

Copies:

Steve Denzler, PE  
Mike Quinn, PE  
John Salvagno, EIT

Enclosures:

**Attachments**

- A Comment – Response Log
- B U.S. Army Corps of Engineers Information Sheet
- C Involved Agency Contact Information
- D SEQR Part I Short EAF
- E Project Site Overview
- F NYSDEC SEQR Short EAF Mapper Results
- G Cultural Resource Information System Results

# ATTACHMENT A

Comment-Response Log



Erie County Water Authority  
MP-084 Town of Tonawanda Transmission Main Design  
Special Services – State Environmental Quality Review Act Part 1  
**Attachment A: Comment – Response Log**

PDF Page No.	ECWA Comment	Arcadis Response
2	NYSDEC SEQR EAF Mapper results should be attached for reference.	Understood. The NYSDEC SEQR Mapper Results have been included in Attachment F.
15	<b>SEQR Short EAF Applicant Information.</b> Update applicant email to lkowalski@ecwa.org.	Understood. Applicant email and phone number have been updated on Short EAF page 1.
15	<b>SEQR Short EAF Question 3.</b> Not sure it matters but do we know where acreage numbers come from. Please provide backup.	<p>Our calculations for the values listed for Question 3 are as follows:</p> <ol style="list-style-type: none"> <li>1. Total acreage of the site of the proposed action = (approximate transmission main distance (ft.)) * (transmission main diameter (ft.)) = (4,150 ft.) * (4 ft.) = 0.38 acres</li> <li>2. Total acreage to be physically disturbed = (approximate transmission main distance excluding CSX railroad crossing (ft.)) * (trench width + assumed disturbed area due to temporary stockpiles, access roads, etc.) + (approximate disturbed area due to bore pits on west and east sides of railroad (ft.<sup>2</sup>) = (31,200 ft.<sup>2</sup> + 59,550 ft.<sup>2</sup> + 1,600 ft.<sup>2</sup>) = 2.12 acres</li> <li>3. Total acreage calculated assuming total 40 ft. wide ECWA permanent easements within the National Grid R.O.W. (20' each for the existing and proposed transmission mains) approximate 4,150 ft. transmission main distance = 3.8 acres.</li> </ol>
16	<b>SEQR Short EAF Question 5.</b> I think we should reference the ECWA Comprehensive Strategic Plan from September 2019 which references redundancy and resiliency.	Understood. Answer to Question 5 updated to "Yes" with ECWA 2019 Comprehensive Strategic Plan noted.
16	<b>SEQR Short EAF Question 12.</b> Couldn't see any archaeological lands nearby on attachment.	Approximate outline of Archaeologically Sensitive Areas shown on the Cultural Resource Information System outlined in red in Attachment G.

Erie County Water Authority  
MP-084 Town of Tonawanda Transmission Main Design  
Special Services – State Environmental Quality Review Act Part 1  
**Attachment A: Comment – Response Log**

PDF Page No.	ECWA Comment	Arcadis Response
16	<b>SEQR Short EAF Question 13b.</b> Do you mean a wetland study?	Yes. Answer to Short EAF Question 13b has been updated.
17	<b>SEQR Short EAF Question 14.</b> This is a different question from 13a. This is asking if we are going through a wetland. So are we going through a wetland, or is one near the project site? Tough to be conservative and say we are impacting a wetland if you don't know. Any evidence of wetlands from a DEC mapper?	<p>For Short EAF Question 14, Arcadis followed the guidelines of the U.S. Army Corps of Engineers Information Sheet Wetlands – <i>What You Should Know Before You Buy or Build</i>, attached for reference. Sections from this document include the following:</p> <ul style="list-style-type: none"> <li>• “If your preliminary review indicates that wetlands and streams may be present on the parcel, you should engage in an individual familiar with federal delineations, such as an environmental consultant, to conduct a formal delineation to identify all wetlands, streams, ditches, drainageways, etc. on the parcel”.</li> </ul> <p>Based on this document, the presence of hydric soils, wetland vegetation, and documented federal wetlands within the National Grid Right of Way on the National Wetlands Inventory Maps, we believe that it is appropriate to be conservative and indicate that wetlands could “occur on, or are likely to be found on the project site”. The DEC Mapper application noted that “digital mapping information on local and federal wetlands and waterbodies is known to be incomplete” but indicated that wetlands could be within or adjacent to the project limits.</p> <p>Per our April 10, 2020 environmental services proposal, we recommend that a wetlands delineation be completed to provide a definitive determination regarding the presence of wetlands. We also recommend that ECWA continue with the coordinated environmental review. Assuming a wetland delineation is completed and indicates no wetlands will be impacted by this project, any permits identified through the coordinated review that are associated with a wetland disturbance would not be required.</p>



# ATTACHMENT B

U.S. Army Corps of Engineers Information Sheet  
Wetlands – What you Should Know Before You Buy or Build





# WETLANDS – WHAT YOU SHOULD KNOW BEFORE YOU BUY OR BUILD

U.S. ARMY CORPS OF ENGINEERS

BUILDING STRONG ®

The U.S. Army Corps of Engineers (USACE) and the U.S. Environmental Protection Agency (USEPA) define wetlands as follows, *“Those areas that are inundated or saturated by surface or groundwater at a frequency and duration sufficient to support, and that under normal circumstances do support, a prevalence of vegetation typically adapted for life in saturated soil conditions. Wetlands generally include swamps, marshes, bogs, and similar areas.”*

Wetlands are areas that are covered by water or have saturated soils for extended periods (minimum of 14 consecutive days) during the growing season. Plants growing in wetlands are adapted to living in saturated soil conditions for at least part of the growing season. Wetlands such as swamps and marshes are often obvious, but some wetlands are not easily recognized, often because they are dry during part of the year or "they just don't look very wet" from the roadside. **Caution: Many wetland areas lack both standing water and saturated soils during at least part of the growing season.**

**There are no definitive maps of federally regulated wetlands or waterways.** Therefore, it is often not possible to determine USACE jurisdiction based solely on an in-office review. In most cases, a site inspection is the only definitive means of determining the presence/absence and extent of wetlands, streams, and other conveyances of water that may be present on a parcel. The USACE consults the following office resources to evaluate the potential for wetlands and other waterways that may be present on a site:

- **U.S. Geological Survey (USGS) quadrangle maps** – <http://www.store.usgs.gov> which typically indicate wetland and streams with unique symbols shown on the map legend.
- **National Wetland Inventory (NWI) maps** - <http://www.fws.gov/wetlands/Data/Mapper.html>. **Use these maps with caution as many federally regulated wetlands do not appear on these maps.** The NWI maps are published by the U.S. Fish and Wildlife Service as habitat maps based on aerial photography and the boundaries shown on the map may not be consistent with wetland boundaries established according to the 1987 USACE Wetland Delineation Manual (Delineation Manual) and associated Regional Supplements.

The NWI maps were not developed for use as confirmation as to the presence/absence of federally (USACE) regulated wetlands. Further, the absence of a mapped wetland on the NWI maps **cannot** be interpreted to indicate that no wetlands exist within the non-mapped area. As indicated above; the only definitive information usually results from a site inspection.

- **Natural Resources Conservation Service (NRCS) Web Soil Survey** which has replaced County Soil Surveys - <http://websoilsurvey.nrcs.usda.gov/app/HomePage.htm>. This tool will help identify the presence of hydric soils or soils with hydric inclusions/components. Hydric soils exhibit poorly and/or very poorly drained characteristics that typically occur in wetlands.

---

**U.S. ARMY CORPS OF ENGINEERS – BUFFALO DISTRICT**

1776 NIAGARA STREET, BUFFALO, NEW YORK 14207-3199  
[www.lrb.usace.army.mil](http://www.lrb.usace.army.mil)

May 2019

- Other On-line Resource Maps:
  - <http://maps.google.com>
  - <http://bing.com/maps/>
- New York State Environmental Resource Mapper: <http://www.dec.ny.gov/gis/erm/>
- Many individual New York State counties have web sites with helpful mapping or geographic information.

Mapped indicators implying that wetlands or waterways may be present on a given parcel include, but are not limited to the following:

- Wetland or waterway symbols on the USGS topographic maps
- Identified wetland types on the NWI or New York State Freshwater Wetland Maps published by the New York State Department of Environmental Conservation
- Hydric soils or soils with hydric inclusions as depicted on the NRCS soil survey
- Streams, drainageways, ponds, or other water bodies as indicated on the USGS or NRCS maps.

If any of these indicators are mapped within a project site, the USACE recommends further investigation to determine if federally regulated wetlands or waterways are present on the site and if a Department of the Army permit is required for the proposed work.

It is not necessary that USACE personnel conduct the preliminary review of these resources. An individual can expedite the review process by conducting the initial review and compiling information which can be provided to the USACE in the event that further investigation is required. A review should be conducted on any land that is in an undeveloped “natural” state (e.g. wooded, scrub shrub, meadow, old field, etc.), that exhibits any of the indicators noted above, or is not currently being cropped and designated as “Prior Converted” (PC) cropland by the U.S. Department of Agriculture/NRCS.

If your preliminary review indicates that wetlands and streams may be present on the parcel, you should engage an individual familiar with federal delineation, such as an environmental consultant, to conduct a formal delineation to identify all wetlands, streams, ditches, drainageways, etc. on the parcel.

Delineation is the procedure used to flag and map the upland/wetland boundary and to identify and map all streams, drainages, other waterways/conveyances etc. on a parcel. Wetlands are required to be delineated in accordance with the Delineation Manual and appropriate Northcentral and Northeast Regional Supplement (Supplement). Copies of the Delineation Manual and the current Supplement version can be obtained at:

<https://www.lrb.usace.army.mil/Missions/Regulatory/Wetland-Information/>

After a wetland and waters delineation has been completed, a delineation report should be submitted to the USACE for review and verification. The report should contain a request that the USACE provide confirmation of the mapped location and boundaries of all aquatic resources identified and a request for determination of federal jurisdiction of the resources.

The delineation should be verified by the USACE **prior to finalizing any project design** for the site to ensure that no further modifications of project plans would be needed to comply with the 404(b)(1) Guidelines (Guidelines). These Guidelines require that all practicable steps are taken to avoid and minimize impacts to aquatic resources. These steps may include, but are not limited to, redesign of the project and consideration of alternative project sites that contain less or no aquatic resources. Compensatory mitigation can be considered only after avoidance and minimization efforts and consideration of alternatives have been evaluated.

**The USACE is the only regulatory agency authorized to determine the presence/absence and extent of federally regulated waters and wetlands.** Note that USACE jurisdiction includes waters and wetlands regulated by the New York State Department of Environmental Conservation (NYSDEC). However, state and federal boundaries may not coincide because the two regulatory agencies utilize different criteria to determine wetland boundaries. The major disparity between federal and state regulatory authority is that the NYSDEC regulates wetland complexes that are 12.4 acres and larger - upon which a 100 foot buffer is imposed. These “State” freshwater wetlands can be viewed on the New York State Environmental Resource Mapper website listed above. In general, the USACE regulates all wetlands regardless of size, and all streams regardless of their classification by NYSDEC.

If the final project design indicates that a Department of the Army permit is required because you propose to place fill into, or conduct certain in-water activities in a jurisdictional water of the United States, you will find the Joint Permit Application and submittal instructions on the USACE Buffalo District website at <https://www.lrb.usace.army.mil/Missions/Regulatory/New-York-Permit-Information/>. You can also contact the Buffalo District Office, 1776 Niagara Street, Buffalo, New York 14207, (716-879-4330) or the Auburn, New York Field Office, 7413 County House Road, Auburn, New York 13021, (315-255-8090) and request that a permit package be sent to you directly.



# ATTACHMENT C

## INVOLVED AGENCY CONTACT INFORMATION



Attachment C  
MP-084 SEQR Involved Agency  
Available Contact Information

Involved Agency	Available Contact Information
Town of Tonawanda	Town of Tonawanda SEQR Committee (716) 877-8804 jemminger@tonawanda.ny.us
City of Tonawanda	City of Tonawanda Engineer (716) 695 – 8624 engineer@tonawandacity.com
Erie County Health Department	Ms. Jennifer DeLaney phworks@health.ny.gov (716) 961-6800
New York State Office of Parks, Recreation and Historic Preservation	New York State Office of Parks, Recreation, and Historic Preservation thomas.lyons@oprph.state.ny.us Phone: (518) 474-0409
United States Army Corps of Engineers	Buffalo District Office (716) 879-4330 LRB.NewYork.RegActions@usace.army.mil
CSX Transportation	Government and State Regulations (904) 366-5005 TellCSX@csx.com
National Grid	Ms. Annette Comer (716) 831 – 7583 Annette.Comer@nationalgrid.com
New York State DEC	Mr. David Denk (716) 851-7165 DEP.R9@dec.ny.gov

# ATTACHMENT D

SEQR PART I SHORT EAF





# Short Environmental Assessment Form

## Part 1 - Project Information

### Instructions for Completing

**Part 1 – Project Information.** The applicant or project sponsor is responsible for the completion of Part 1. Responses become part of the application for approval or funding, are subject to public review, and may be subject to further verification. Complete Part 1 based on information currently available. If additional research or investigation would be needed to fully respond to any item, please answer as thoroughly as possible based on current information.

Complete all items in Part 1. You may also provide any additional information which you believe will be needed by or useful to the lead agency; attach additional pages as necessary to supplement any item.

<b>Part 1 – Project and Sponsor Information</b>			
Name of Action or Project: Erie County Water Authority 48-inch Transmission main predominately within the Town of Tonawanda			
Project Location (describe, and attach a location map): near the Town of Tonawanda Landfill and National Grid Right-of-Way; nearby address is 15 Pirson Parkway, Tonawanda, NY 14150			
Brief Description of Proposed Action: The Erie County Water Authority (ECWA) is pursuing the design and construction of a 48-inch water transmission main in the City of Tonawanda and Town of Tonawanda. The transmission main will be installed approximately parallel to, and north of, an existing ECWA transmission main. The project generally includes the excavation, and installation of approximately 4,150 linear feet of prestressed concrete cylinder pipe from an interconnection point near 2242 Military Road Tonawanda, NY (East) and 316 Brookside Terrace West (West) Tonawanda, NY. The work is expected to be completed in 2021 and will provide redundancy at a critical point in the ECWA distribution system.			
Name of Applicant or Sponsor: Erie County Water Authority		Telephone: 716-685-8220 E-Mail: lkowalski@ecwa.org	
Address: 3030 Union Road			
City/PO: Cheektowaga		State: NY	Zip Code: 14227
1. Does the proposed action only involve the legislative adoption of a plan, local law, ordinance, administrative rule, or regulation? If Yes, attach a narrative description of the intent of the proposed action and the environmental resources that may be affected in the municipality and proceed to Part 2. If no, continue to question 2.		NO <input checked="" type="checkbox"/>	YES <input type="checkbox"/>
2. Does the proposed action require a permit, approval or funding from any other government Agency? If Yes, list agency(s) name and permit or approval: Permit: Erie County Health Department; Non Government Agency Permits/Approvals: National Grid, CSX Transportation		NO <input type="checkbox"/>	YES <input checked="" type="checkbox"/>
3. a. Total acreage of the site of the proposed action? <u>0.38</u> acres b. Total acreage to be physically disturbed? <u>2.12</u> acres c. Total acreage (project site and any contiguous properties) owned or controlled by the applicant or project sponsor? <u>3.80</u> acres Note: Total acreage controlled calculated using National Grid permanent easement.			
4. Check all land uses that occur on, are adjoining or near the proposed action: <input checked="" type="checkbox"/> Urban <input type="checkbox"/> Rural (non-agriculture) <input checked="" type="checkbox"/> Industrial <input checked="" type="checkbox"/> Commercial <input checked="" type="checkbox"/> Residential (suburban) <input type="checkbox"/> Forest <input type="checkbox"/> Agriculture <input type="checkbox"/> Aquatic <input type="checkbox"/> Other(Specify): <input type="checkbox"/> Parkland			

<p>5. Is the proposed action,</p> <p>a. A permitted use under the zoning regulations?</p> <p>b. Consistent with the adopted comprehensive plan?</p>	<p><b>Note:</b> ECWA adopted a Comprehensive Strategic Plan in 2019 with four overarching goals: Expansion, Redundancy, Automation / Cyber Security, and Investment.</p>	<p>NO</p> <p><input type="checkbox"/></p> <p><input type="checkbox"/></p>	<p>YES</p> <p><input checked="" type="checkbox"/></p> <p><input checked="" type="checkbox"/></p>	<p>N/A</p> <p><input type="checkbox"/></p> <p><input type="checkbox"/></p>
<p>6. Is the proposed action consistent with the predominant character of the existing built or natural landscape?</p>	<p>NO</p> <p><input type="checkbox"/></p> <p>YES</p> <p><input checked="" type="checkbox"/></p>			
<p>7. Is the site of the proposed action located in, or does it adjoin, a state listed Critical Environmental Area?</p> <p>If Yes, identify: _____</p>	<p>NO</p> <p><input checked="" type="checkbox"/></p> <p>YES</p> <p><input type="checkbox"/></p>			
<p>8. a. Will the proposed action result in a substantial increase in traffic above present levels?</p> <p>b. Are public transportation services available at or near the site of the proposed action?</p> <p>c. Are any pedestrian accommodations or bicycle routes available on or near the site of the proposed action?</p>	<p>NO</p> <p><input checked="" type="checkbox"/></p> <p><input type="checkbox"/></p> <p><input type="checkbox"/></p> <p>YES</p> <p><input type="checkbox"/></p> <p><input checked="" type="checkbox"/></p> <p><input checked="" type="checkbox"/></p>			
<p>9. Does the proposed action meet or exceed the state energy code requirements?</p> <p>If the proposed action will exceed requirements, describe design features and technologies:</p> <p>Project will improve water system hydraulics which may result in a small decrease</p> <p>_____</p> <p>in overall energy usage.</p> <p>_____</p>	<p>NO</p> <p><input type="checkbox"/></p> <p>YES</p> <p><input checked="" type="checkbox"/></p>			
<p>10. Will the proposed action connect to an existing public/private water supply?</p> <p>If No, describe method for providing potable water: _____</p> <p>Project will interconnect with an existing 48-inch transmission main at the east and west termination points.</p> <p>_____</p>	<p>NO</p> <p><input type="checkbox"/></p> <p>YES</p> <p><input checked="" type="checkbox"/></p>			
<p>11. Will the proposed action connect to existing wastewater utilities?</p> <p>If No, describe method for providing wastewater treatment: _____</p> <p>Not applicable for a water transmission main project.</p> <p>_____</p>	<p>NO</p> <p><input checked="" type="checkbox"/></p> <p>YES</p> <p><input type="checkbox"/></p>			
<p>12. a. Does the project site contain, or is it substantially contiguous to, a building, archaeological site, or district which is listed on the National or State Register of Historic Places, or that has been determined by the Commissioner of the NYS Office of Parks, Recreation and Historic Preservation to be eligible for listing on the State Register of Historic Places?</p> <p>b. Is the project site, or any portion of it, located in or adjacent to an area designated as sensitive for archaeological sites on the NY State Historic Preservation Office (SHPO) archaeological site inventory?</p>	<p>NO</p> <p><input checked="" type="checkbox"/></p> <p><input type="checkbox"/></p> <p>YES</p> <p><input type="checkbox"/></p> <p><input checked="" type="checkbox"/></p>			
<p>13. a. Does any portion of the site of the proposed action, or lands adjoining the proposed action, contain wetlands or other waterbodies regulated by a federal, state or local agency?</p> <p>b. Would the proposed action physically alter, or encroach into, any existing wetland or waterbody?</p> <p>If Yes, identify the wetland or waterbody and extent of alterations in square feet or acres:</p> <p>The quantity of wetlands that could be impacted during construction by this project is unknown at this time as a wetland study has not been completed. The buried waterline should not have any impacts to wetlands post construction.</p> <p>_____</p> <p>_____</p> <p>_____</p>	<p>NO</p> <p><input type="checkbox"/></p> <p><input checked="" type="checkbox"/></p> <p>YES</p> <p><input checked="" type="checkbox"/></p> <p><input type="checkbox"/></p> <p><input type="checkbox"/></p> <p><input type="checkbox"/></p>			

14. Identify the typical habitat types that occur on, or are likely to be found on the project site. Check all that apply: <input type="checkbox"/> Shoreline <input type="checkbox"/> Forest <input checked="" type="checkbox"/> Agricultural/grasslands <input type="checkbox"/> Early mid-successional <input checked="" type="checkbox"/> Wetland <input type="checkbox"/> Urban <input checked="" type="checkbox"/> Suburban		
15. Does the site of the proposed action contain any species of animal, or associated habitats, listed by the State or Federal government as threatened or endangered?	NO	YES
	<input checked="" type="checkbox"/>	<input type="checkbox"/>
16. Is the project site located in the 100-year flood plan?	NO	YES
	<input checked="" type="checkbox"/>	<input type="checkbox"/>
17. Will the proposed action create storm water discharge, either from point or non-point sources? If Yes, <div style="margin-left: 20px;">           a. Will storm water discharges flow to adjacent properties?             b. Will storm water discharges be directed to established conveyance systems (runoff and storm drains)?         </div> If Yes, briefly describe: <div style="border-bottom: 1px solid black; height: 1.2em; margin-top: 5px;"></div> <div style="border-bottom: 1px solid black; height: 1.2em; margin-top: 5px;"></div>	NO	YES
	<input checked="" type="checkbox"/>	<input type="checkbox"/>
	<input type="checkbox"/>	<input type="checkbox"/>
	<input type="checkbox"/>	<input type="checkbox"/>
18. Does the proposed action include construction or other activities that would result in the impoundment of water or other liquids (e.g., retention pond, waste lagoon, dam)? If Yes, explain the purpose and size of the impoundment: <div style="border-bottom: 1px solid black; height: 1.2em; margin-top: 5px;"></div> <div style="border-bottom: 1px solid black; height: 1.2em; margin-top: 5px;"></div>	NO	YES
	<input checked="" type="checkbox"/>	<input type="checkbox"/>
19. Has the site of the proposed action or an adjoining property been the location of an active or closed solid waste management facility? If Yes, describe: <u>The transmission main will be installed approximately 14 feet south of the</u> <u>southern property line of the inactive Town of Tonawanda landfill.</u>	NO	YES
	<input type="checkbox"/>	<input checked="" type="checkbox"/>
20. Has the site of the proposed action or an adjoining property been the subject of remediation (ongoing or completed) for hazardous waste? If Yes, describe: <u>The Town of Tonawanda has overseen numerous remediation activities related to the</u> <u>Formerly Utilized Sites Remedial Action Program in coordination with numerous, relevant agencies.</u>	NO	YES
	<input type="checkbox"/>	<input checked="" type="checkbox"/>
<p><b>I CERTIFY THAT THE INFORMATION PROVIDED ABOVE IS TRUE AND ACCURATE TO THE BEST OF MY KNOWLEDGE</b></p> <p>Applicant/sponsor/name: _____ Date: _____</p> <p>Signature: _____ Title: _____</p>		

# ATTACHMENT E

## PROJECT SITE OVERVIEW





MP-084 Town of Tonawanda  
Transmission Main Design  
State Environmental Quality Review



Attachment B  
Site Overview

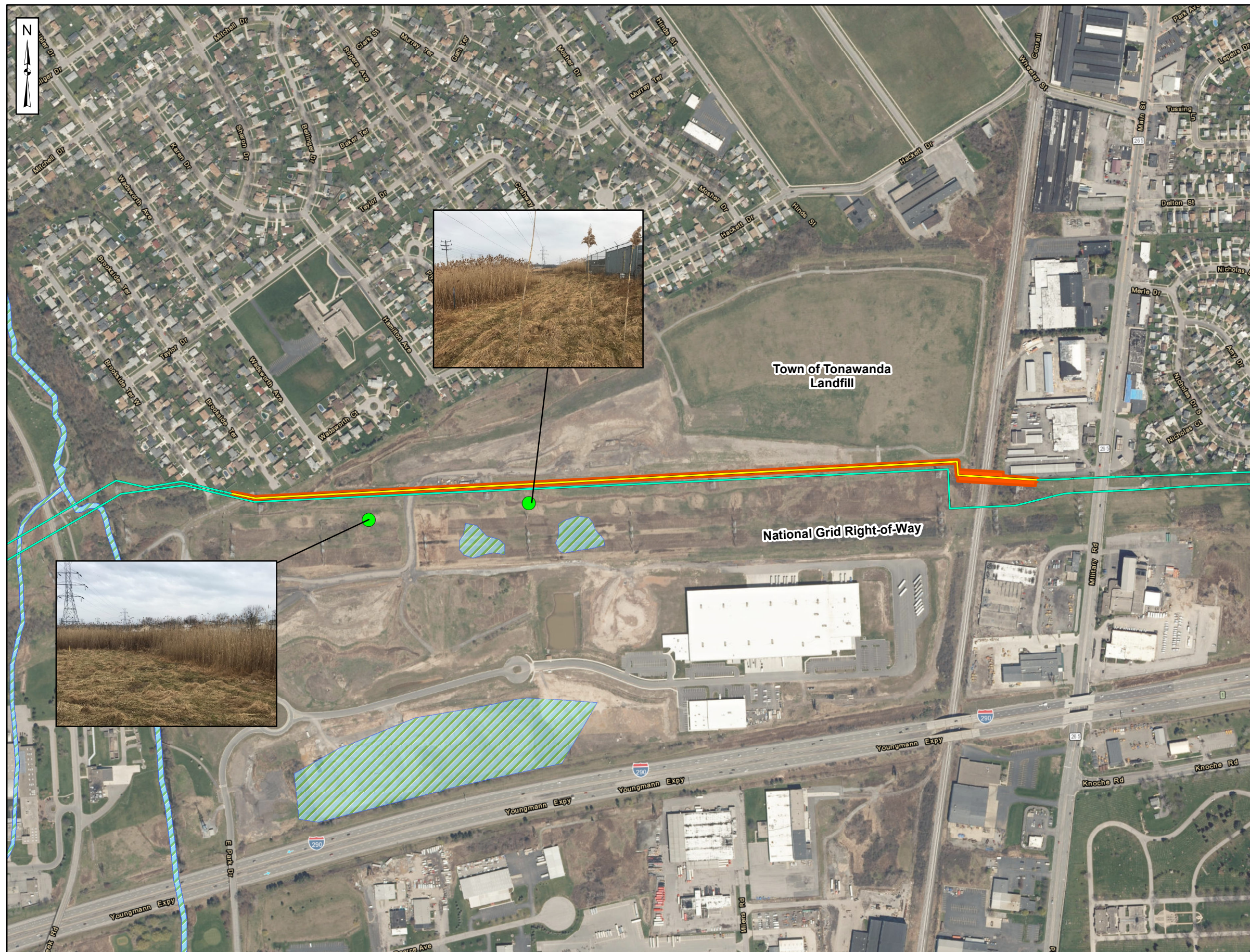
Legend

- Existing ECWA 48-inch Water Main
- Proposed 48-inch Water Main
- U.S. Army Corps of Engineer Wetland
- Stream
- Photo Location
- Anticipated Disturbed Area

0 250 500  
Feet

Data Source: ESRI, ArcGIS Online,  
Aerial Imagery

Coordinate System: New York State Plane West  
Datum: NAD83  
Units: Feet





# ATTACHMENT F

NYSDEC SEQR Short EAF Mapper Results



# *Short Environmental Assessment Form*

## *Part 1 - Project Information*

### Instructions for Completing

**Part 1 – Project Information.** The applicant or project sponsor is responsible for the completion of Part 1. Responses become part of the application for approval or funding, are subject to public review, and may be subject to further verification. Complete Part 1 based on information currently available. If additional research or investigation would be needed to fully respond to any item, please answer as thoroughly as possible based on current information.

Complete all items in Part 1. You may also provide any additional information which you believe will be needed by or useful to the lead agency; attach additional pages as necessary to supplement any item.

<b>Part 1 – Project and Sponsor Information</b>				
Name of Action or Project:				
Project Location (describe, and attach a location map):				
Brief Description of Proposed Action:				
Name of Applicant or Sponsor:			Telephone:	
			E-Mail:	
Address:				
City/PO:			State:	Zip Code:
1. Does the proposed action only involve the legislative adoption of a plan, local law, ordinance, administrative rule, or regulation?			NO	YES
If Yes, attach a narrative description of the intent of the proposed action and the environmental resources that may be affected in the municipality and proceed to Part 2. If no, continue to question 2.			<input type="checkbox"/>	<input type="checkbox"/>
2. Does the proposed action require a permit, approval or funding from any other government Agency?			NO	YES
If Yes, list agency(s) name and permit or approval:			<input type="checkbox"/>	<input type="checkbox"/>
3.   a. Total acreage of the site of the proposed action? _____ acres b. Total acreage to be physically disturbed? _____ acres c. Total acreage (project site and any contiguous properties) owned _____ acres or controlled by the applicant or project sponsor?				
4. Check all land uses that occur on, are adjoining or near the proposed action: 5.       Urban       Rural (non-agriculture)       Industrial       Commercial       Residential (suburban) <input type="checkbox"/> Forest       Agriculture       Aquatic       Other(Specify): <input type="checkbox"/> Parkland				

5. Is the proposed action,	NO	YES	N/A
a. A permitted use under the zoning regulations?	<input type="checkbox"/>	<input type="checkbox"/>	<input type="checkbox"/>
b. Consistent with the adopted comprehensive plan?	<input type="checkbox"/>	<input type="checkbox"/>	<input type="checkbox"/>
6. Is the proposed action consistent with the predominant character of the existing built or natural landscape?	NO	YES	
	<input type="checkbox"/>	<input type="checkbox"/>	
7. Is the site of the proposed action located in, or does it adjoin, a state listed Critical Environmental Area?	NO	YES	
If Yes, identify: _____	<input type="checkbox"/>	<input type="checkbox"/>	
8. a. Will the proposed action result in a substantial increase in traffic above present levels?	NO	YES	
	<input type="checkbox"/>	<input type="checkbox"/>	
b. Are public transportation services available at or near the site of the proposed action?	<input type="checkbox"/>	<input type="checkbox"/>	
c. Are any pedestrian accommodations or bicycle routes available on or near the site of the proposed action?	<input type="checkbox"/>	<input type="checkbox"/>	
9. Does the proposed action meet or exceed the state energy code requirements?	NO	YES	
If the proposed action will exceed requirements, describe design features and technologies: _____ _____	<input type="checkbox"/>	<input type="checkbox"/>	
10. Will the proposed action connect to an existing public/private water supply?	NO	YES	
If No, describe method for providing potable water: _____ _____	<input type="checkbox"/>	<input type="checkbox"/>	
11. Will the proposed action connect to existing wastewater utilities?	NO	YES	
If No, describe method for providing wastewater treatment: _____ _____	<input type="checkbox"/>	<input type="checkbox"/>	
12. a. Does the project site contain, or is it substantially contiguous to, a building, archaeological site, or district which is listed on the National or State Register of Historic Places, or that has been determined by the Commissioner of the NYS Office of Parks, Recreation and Historic Preservation to be eligible for listing on the State Register of Historic Places?	NO	YES	
	<input type="checkbox"/>	<input type="checkbox"/>	
b. Is the project site, or any portion of it, located in or adjacent to an area designated as sensitive for archaeological sites on the NY State Historic Preservation Office (SHPO) archaeological site inventory?	<input type="checkbox"/>	<input type="checkbox"/>	
13. a. Does any portion of the site of the proposed action, or lands adjoining the proposed action, contain wetlands or other waterbodies regulated by a federal, state or local agency?	NO	YES	
	<input type="checkbox"/>	<input type="checkbox"/>	
b. Would the proposed action physically alter, or encroach into, any existing wetland or waterbody?	<input type="checkbox"/>	<input type="checkbox"/>	
If Yes, identify the wetland or waterbody and extent of alterations in square feet or acres: _____ _____ _____			



14. Identify the typical habitat types that occur on, or are likely to be found on the project site. Check all that apply:		
<input type="checkbox"/> Shoreline <input type="checkbox"/> Forest    Agricultural/grasslands    Early mid-successional Wetland <input type="checkbox"/> Urban    Suburban		
15. Does the site of the proposed action contain any species of animal, or associated habitats, listed by the State or Federal government as threatened or endangered?	NO	YES
	<input type="checkbox"/>	<input type="checkbox"/>
16. Is the project site located in the 100-year flood plan?	NO	YES
	<input type="checkbox"/>	<input type="checkbox"/>
17. Will the proposed action create storm water discharge, either from point or non-point sources? If Yes,  a. Will storm water discharges flow to adjacent properties?  b. Will storm water discharges be directed to established conveyance systems (runoff and storm drains)? If Yes, briefly describe: _____ _____	NO	YES
	<input type="checkbox"/>	<input type="checkbox"/>
	<input type="checkbox"/>	<input type="checkbox"/>
	<input type="checkbox"/>	<input type="checkbox"/>
18. Does the proposed action include construction or other activities that would result in the impoundment of water or other liquids (e.g., retention pond, waste lagoon, dam)? If Yes, explain the purpose and size of the impoundment: _____ _____	NO	YES
	<input type="checkbox"/>	<input type="checkbox"/>
19. Has the site of the proposed action or an adjoining property been the location of an active or closed solid waste management facility? If Yes, describe: _____ _____	NO	YES
	<input type="checkbox"/>	<input type="checkbox"/>
20. Has the site of the proposed action or an adjoining property been the subject of remediation (ongoing or completed) for hazardous waste? If Yes, describe: _____ _____	NO	YES
	<input type="checkbox"/>	<input type="checkbox"/>
<b>I CERTIFY THAT THE INFORMATION PROVIDED ABOVE IS TRUE AND ACCURATE TO THE BEST OF MY KNOWLEDGE</b>		
Applicant/sponsor/name: _____ Date: _____		
Signature: _____ Title: _____		



**Disclaimer:** The EAF Mapper is a screening tool intended to assist project sponsors and reviewing agencies in preparing an environmental assessment form (EAF). Not all questions asked in the EAF are answered by the EAF Mapper. Additional information on any EAF question can be obtained by consulting the EAF Workbooks. Although the EAF Mapper provides the most up-to-date digital data available to DEC, you may also need to contact local or other data sources in order to obtain data not provided by the Mapper. Digital data is not a substitute for agency determinations.



Part 1 / Question 7 [Critical Environmental Area]	No
Part 1 / Question 12a [National or State Register of Historic Places or State Eligible Sites]	No
Part 1 / Question 12b [Archeological Sites]	Yes
Part 1 / Question 13a [Wetlands or Other Regulated Waterbodies]	Yes - Digital mapping information on local and federal wetlands and waterbodies is known to be incomplete. Refer to EAF Workbook.
Part 1 / Question 15 [Threatened or Endangered Animal]	No
Part 1 / Question 16 [100 Year Flood Plain]	No
Part 1 / Question 20 [Remediation Site]	Yes

# ATTACHMENT G

## CULTURAL RESOURCE INFORMATION SYSTEM RESULTS



Criteria
Spatial
Results

Lookup
USN
Survey
National Register
Library

USN Number: 
National Register Number: 
Survey Number: 
Submission Token:



# Short Environmental Assessment Form

## Part 1 - Project Information

### Instructions for Completing

**Part 1 – Project Information.** The applicant or project sponsor is responsible for the completion of Part 1. Responses become part of the application for approval or funding, are subject to public review, and may be subject to further verification. Complete Part 1 based on information currently available. If additional research or investigation would be needed to fully respond to any item, please answer as thoroughly as possible based on current information.

Complete all items in Part 1. You may also provide any additional information which you believe will be needed by or useful to the lead agency; attach additional pages as necessary to supplement any item.

<b>Part 1 – Project and Sponsor Information</b>			
Name of Action or Project: Erie County Water Authority 48-inch Transmission main predominately within the Town of Tonawanda			
Project Location (describe, and attach a location map): near the Town of Tonawanda Landfill and National Grid Right-of-Way; nearby address is 15 Pirson Parkway, Tonawanda, NY 14150			
Brief Description of Proposed Action: The Erie County Water Authority (ECWA) is pursuing the design and construction of a 48-inch water transmission main in the City of Tonawanda and Town of Tonawanda. The transmission main will be installed approximately parallel to, and north of, an existing ECWA transmission main. The project generally includes the excavation, and installation of approximately 4,150 linear feet of prestressed concrete cylinder pipe from an interconnection point near 2242 Military Road Tonawanda, NY (East) and 316 Brookside Terrace West (West) Tonawanda, NY. The work is expected to be completed in 2021 and will provide redundancy at a critical point in the ECWA distribution system.			
Name of Applicant or Sponsor: Erie County Water Authority		Telephone: 716-685-8220 E-Mail: lkowalski@ecwa.org	
Address: 3030 Union Road			
City/PO: Cheektowaga		State: NY	Zip Code: 14227
1. Does the proposed action only involve the legislative adoption of a plan, local law, ordinance, administrative rule, or regulation? If Yes, attach a narrative description of the intent of the proposed action and the environmental resources that may be affected in the municipality and proceed to Part 2. If no, continue to question 2.		NO <input checked="" type="checkbox"/>	YES <input type="checkbox"/>
2. Does the proposed action require a permit, approval or funding from any other government Agency? If Yes, list agency(s) name and permit or approval: Permit: Erie County Health Department; Non Government Agency Permits/Approvals: National Grid, CSX Transportation		NO <input type="checkbox"/>	YES <input checked="" type="checkbox"/>
3. a. Total acreage of the site of the proposed action? <u>0.38</u> acres b. Total acreage to be physically disturbed? <u>2.12</u> acres c. Total acreage (project site and any contiguous properties) owned or controlled by the applicant or project sponsor? <u>3.80</u> acres Note: Total acreage controlled calculated using National Grid permanent easement.			
4. Check all land uses that occur on, are adjoining or near the proposed action: <input checked="" type="checkbox"/> Urban <input type="checkbox"/> Rural (non-agriculture) <input checked="" type="checkbox"/> Industrial <input checked="" type="checkbox"/> Commercial <input checked="" type="checkbox"/> Residential (suburban) <input type="checkbox"/> Forest <input type="checkbox"/> Agriculture <input type="checkbox"/> Aquatic <input type="checkbox"/> Other(Specify): <input type="checkbox"/> Parkland			



<p>5. Is the proposed action,</p> <p>a. A permitted use under the zoning regulations?</p> <p>b. Consistent with the adopted comprehensive plan?</p>	<p><b>Note:</b> ECWA adopted a Comprehensive Strategic Plan in 2019 with four overarching goals: Expansion, Redundancy, Automation / Cyber Security, and Investment.</p>	<p>NO</p> <p><input type="checkbox"/></p> <p><input type="checkbox"/></p>	<p>YES</p> <p><input checked="" type="checkbox"/></p> <p><input checked="" type="checkbox"/></p>	<p>N/A</p> <p><input type="checkbox"/></p> <p><input type="checkbox"/></p>
<p>6. Is the proposed action consistent with the predominant character of the existing built or natural landscape?</p>	<p>NO</p> <p><input type="checkbox"/></p> <p>YES</p> <p><input checked="" type="checkbox"/></p>			
<p>7. Is the site of the proposed action located in, or does it adjoin, a state listed Critical Environmental Area?</p> <p>If Yes, identify: _____</p>	<p>NO</p> <p><input checked="" type="checkbox"/></p> <p>YES</p> <p><input type="checkbox"/></p>			
<p>8. a. Will the proposed action result in a substantial increase in traffic above present levels?</p> <p>b. Are public transportation services available at or near the site of the proposed action?</p> <p>c. Are any pedestrian accommodations or bicycle routes available on or near the site of the proposed action?</p>	<p>NO</p> <p><input checked="" type="checkbox"/></p> <p><input type="checkbox"/></p> <p><input type="checkbox"/></p> <p>YES</p> <p><input type="checkbox"/></p> <p><input checked="" type="checkbox"/></p> <p><input checked="" type="checkbox"/></p>			
<p>9. Does the proposed action meet or exceed the state energy code requirements?</p> <p>If the proposed action will exceed requirements, describe design features and technologies:</p> <p>Project will improve water system hydraulics which may result in a small decrease</p> <p>_____</p> <p>in overall energy usage.</p> <p>_____</p>	<p>NO</p> <p><input type="checkbox"/></p> <p>YES</p> <p><input checked="" type="checkbox"/></p>			
<p>10. Will the proposed action connect to an existing public/private water supply?</p> <p>If No, describe method for providing potable water: _____</p> <p>Project will interconnect with an existing 48-inch transmission main at the east and west termination points.</p> <p>_____</p>	<p>NO</p> <p><input type="checkbox"/></p> <p>YES</p> <p><input checked="" type="checkbox"/></p>			
<p>11. Will the proposed action connect to existing wastewater utilities?</p> <p>If No, describe method for providing wastewater treatment: _____</p> <p>Not applicable for a water transmission main project.</p> <p>_____</p>	<p>NO</p> <p><input checked="" type="checkbox"/></p> <p>YES</p> <p><input type="checkbox"/></p>			
<p>12. a. Does the project site contain, or is it substantially contiguous to, a building, archaeological site, or district which is listed on the National or State Register of Historic Places, or that has been determined by the Commissioner of the NYS Office of Parks, Recreation and Historic Preservation to be eligible for listing on the State Register of Historic Places?</p> <p>b. Is the project site, or any portion of it, located in or adjacent to an area designated as sensitive for archaeological sites on the NY State Historic Preservation Office (SHPO) archaeological site inventory?</p>	<p>NO</p> <p><input checked="" type="checkbox"/></p> <p><input type="checkbox"/></p> <p>YES</p> <p><input type="checkbox"/></p> <p><input checked="" type="checkbox"/></p>			
<p>13. a. Does any portion of the site of the proposed action, or lands adjoining the proposed action, contain wetlands or other waterbodies regulated by a federal, state or local agency?</p> <p>b. Would the proposed action physically alter, or encroach into, any existing wetland or waterbody?</p> <p>If Yes, identify the wetland or waterbody and extent of alterations in square feet or acres:</p> <p>The quantity of wetlands that could be impacted during construction by this project is unknown at this time as a wetland study has not been completed. The buried waterline should not have any impacts to wetlands post construction.</p> <p>_____</p> <p>_____</p> <p>_____</p>	<p>NO</p> <p><input type="checkbox"/></p> <p><input checked="" type="checkbox"/></p> <p>YES</p> <p><input checked="" type="checkbox"/></p> <p><input type="checkbox"/></p> <p><input type="checkbox"/></p> <p><input type="checkbox"/></p>			

14. Identify the typical habitat types that occur on, or are likely to be found on the project site. Check all that apply: <input type="checkbox"/> Shoreline <input type="checkbox"/> Forest <input checked="" type="checkbox"/> Agricultural/grasslands <input type="checkbox"/> Early mid-successional <input checked="" type="checkbox"/> Wetland <input type="checkbox"/> Urban <input checked="" type="checkbox"/> Suburban		
15. Does the site of the proposed action contain any species of animal, or associated habitats, listed by the State or Federal government as threatened or endangered?	NO	YES
	<input checked="" type="checkbox"/>	<input type="checkbox"/>
16. Is the project site located in the 100-year flood plan?	NO	YES
	<input checked="" type="checkbox"/>	<input type="checkbox"/>
17. Will the proposed action create storm water discharge, either from point or non-point sources? If Yes, <div style="margin-left: 20px;">           a. Will storm water discharges flow to adjacent properties?             b. Will storm water discharges be directed to established conveyance systems (runoff and storm drains)?         </div> If Yes, briefly describe: <div style="border-bottom: 1px solid black; height: 20px; margin-top: 5px;"></div> <div style="border-bottom: 1px solid black; height: 20px; margin-top: 5px;"></div>	NO	YES
	<input checked="" type="checkbox"/>	<input type="checkbox"/>
	<input type="checkbox"/>	<input type="checkbox"/>
	<input type="checkbox"/>	<input type="checkbox"/>
18. Does the proposed action include construction or other activities that would result in the impoundment of water or other liquids (e.g., retention pond, waste lagoon, dam)? If Yes, explain the purpose and size of the impoundment: <div style="border-bottom: 1px solid black; height: 20px; margin-top: 5px;"></div> <div style="border-bottom: 1px solid black; height: 20px; margin-top: 5px;"></div>	NO	YES
	<input checked="" type="checkbox"/>	<input type="checkbox"/>
19. Has the site of the proposed action or an adjoining property been the location of an active or closed solid waste management facility? If Yes, describe: <u>The transmission main will be installed approximately 14 feet south of the</u> <u>southern property line of the inactive Town of Tonawanda landfill.</u>	NO	YES
	<input type="checkbox"/>	<input checked="" type="checkbox"/>
20. Has the site of the proposed action or an adjoining property been the subject of remediation (ongoing or completed) for hazardous waste? If Yes, describe: <u>The Town of Tonawanda has overseen numerous remediation activities related to the</u> <u>Formerly Utilized Sites Remedial Action Program in coordination with numerous, relevant agencies.</u>	NO	YES
	<input type="checkbox"/>	<input checked="" type="checkbox"/>
<p><b>I CERTIFY THAT THE INFORMATION PROVIDED ABOVE IS TRUE AND ACCURATE TO THE BEST OF MY KNOWLEDGE</b></p> <p>Applicant/sponsor/name: _____ Date: _____</p> <p>Signature: _____ Title: _____</p>		